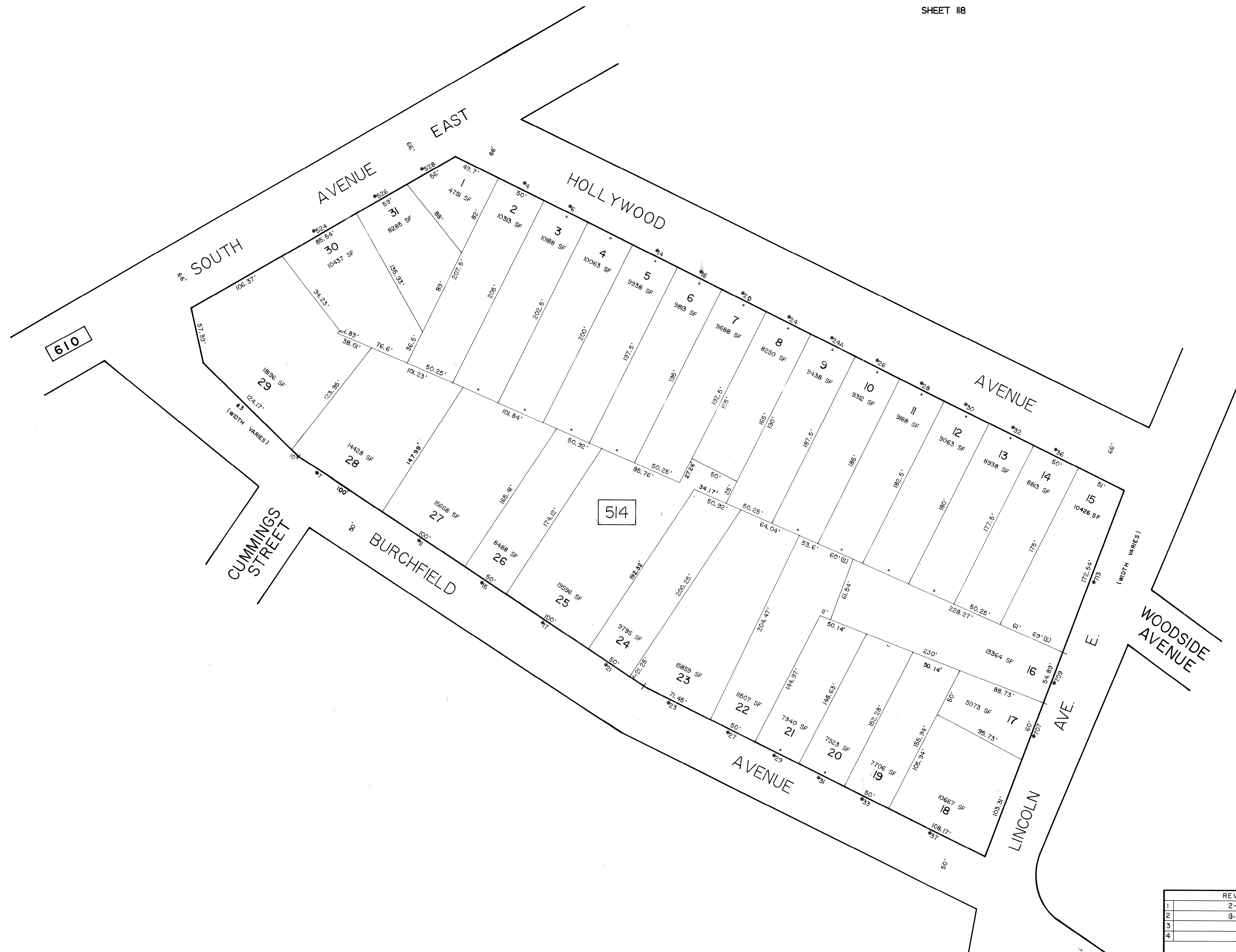


SHEET 118

SHEET 117



SHEET 125

SHEET 120

NEW JERSEY DEPARTMENT OF THE TREASURY  
DIVISION OF TAXATION  
LOCAL PROPERTY AND PUBLIC UTILITY BRANCH  
APPROVED AS A TAX MAP PURSUANT TO THE  
PROVISIONS OF CHAPTER 175, LAWS OF 1913, ETC.  
FOR THE DIRECTOR, DIVISION OF TAXATION  
*J. H. Dineen*  
BY: *J. H. Dineen* P.E. & L.S.  
DATE: JUL 31 1978 SERIAL NO. 576

REVISIONS		
1	2-1-1978	8
2	3-14-1981	7
3		6
4		5

TAX MAP  
TOWNSHIP OF CRANFORD  
UNION COUNTY, NEW JERSEY  
SCALE 1"= 50' JUNE 1977

PREPARED BY:  
**AERO SERVICE**  
EDMUND P. DUPUY  
N.J. LICENSED LAND SURVEYOR  
812 CHURCHVILLE ROAD  
SOUTHAMPTON, PA. 18966

GREGORY A. SGROI  
TOWNSHIP ENGINEER