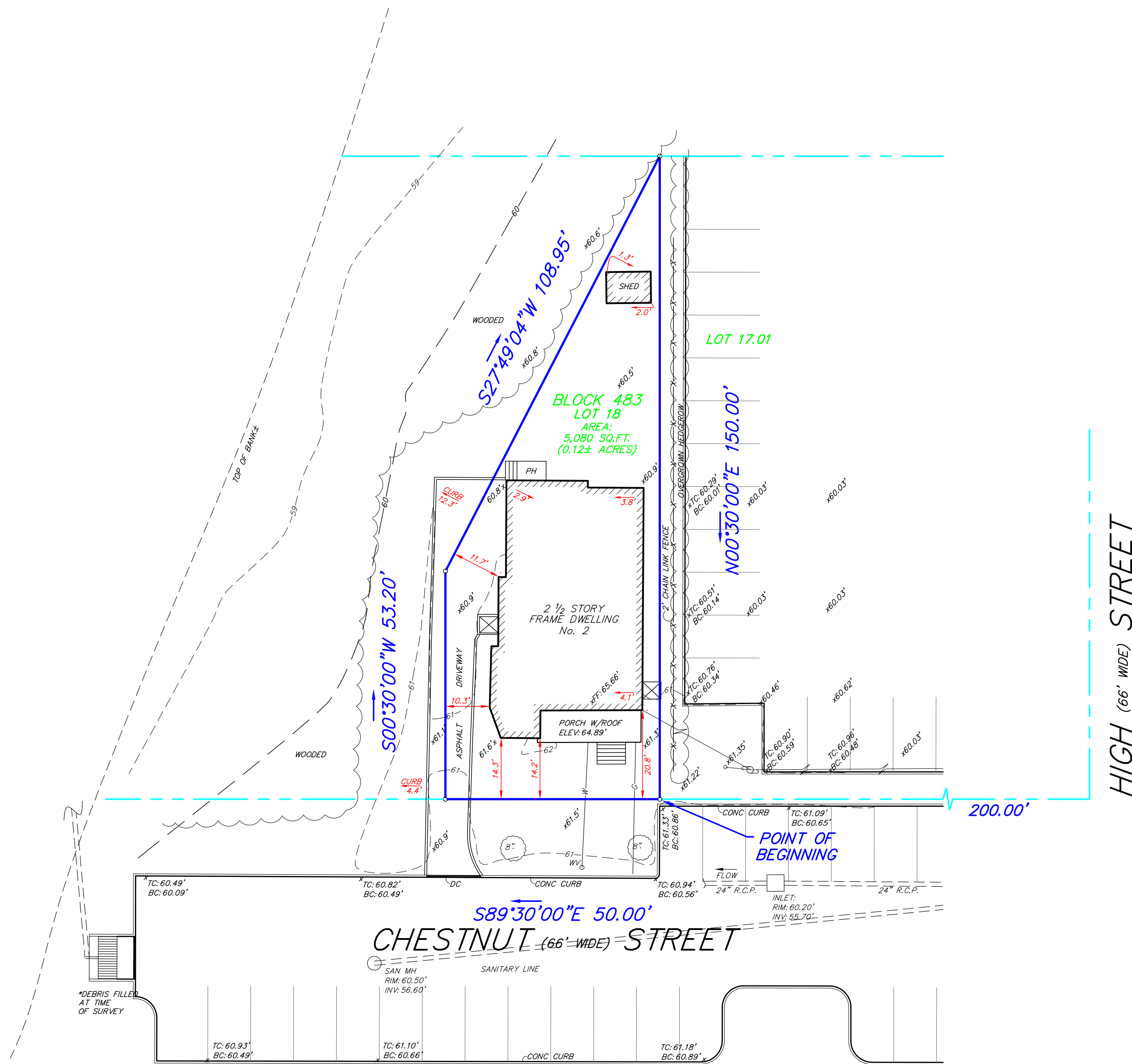


NORTH
REF No. 1



EXISTING TOPOGRAPHY LEGEND

	TYPE "B" INLET		UTILITY POLE
	TYPE "E" INLET		UTILITY POLE w/ LIGHT
	TYPE "A" INLET		LIGHT POLE
	MANHOLE (LABELED)		WALL MOUNTED LIGHT
	CLEAN OUT		OVERHEAD WIRES
	HYDRANT		JUNCTION BOX
	WATER VALVE AN BOX OR SERVICE		TRANSFORMER
	GAS VALVE AND BOX OR SERVICE		UTILITY POLE WITH GUY WIRE
	CURB (TYPE - LABELED)		TREE (DECIDUOUS) WITH CALIPER
	SIGN		TREE (CONIFEROUS) WITH CALIPER
	SANITARY SEWER PIPES (TYPE AND SIZE LABELED)		INDIVIDUAL SHRUBS & BUSHES
	STORM SEWER PIPES (TYPE AND SIZE LABELED)		HEDGES OR BUSHES
	UNDERGROUND CONDUIT (LABELED)		EDGE OF WOODS
	WATER LINE		EXISTING CONTOUR LINE
	GAS LINE MARKOUT		EXISTING SPOT ELEVATION
	TELEPHONE LINE		RAIL ROAD TRACKS
	ELECTRIC LINE		GUIDE RAIL (LABELED)
	FIBER OPTIC LINE		HEADWALL
	CHAIN LINK FENCE		FLARED END SECTION
	POST & RAIL FENCE		CONC. SIDEWALK
	RAILING (LABELED)		BRICK SIDEWALK
	GATE (SINGLE)		CENTERLINE
	GATE (DOUBLE)		BASELINE
	WELL (LABELED)		RIGHT OF WAY LINE
	ROCK WALL OR RIP RAP		
	EXPOSED LEDGE ROCK OR BOULDER		

CERTIFICATION:
I HEREBY CERTIFY TO THE FOLLOWING PARTIES LISTED BELOW, THAT THIS MAP HAS BEEN PREPARED UNDER MY DIRECT SUPERVISION AND IS BASED UPON AN ACTUAL FIELD SURVEY PERFORMED 02-08-2016 AND TO THE BEST OF MY PROFESSIONAL KNOWLEDGE, INFORMATION AND BELIEF, CORRECTLY REPRESENTS THE CONDITIONS FOUND EXCEPT SUCH EASEMENTS NOT DISCLOSED IN THE TITLE REPORT, OR FOUND BELOW THE GROUND.

THIS MAP IS CERTIFIED TO:
-2 CHESTNUT ST LLC
-IRON ORE PROPERTIES LLC
-TOWNSHIP OF CRANFORD

COLOR KEY:
-BLUE: BOUNDARY LINES, COURSES AND DISTANCES
-GREEN: TAX LOT/BLOCK AND AREA
-RED: BOUNDARY OFFSETS
-BLACK: EXISTING FEATURES

ABBREVIATIONS:
-FC: FENCE CORNER -MH: MANHOLE -PH: PORCH
-DC: DROP CURB -WV: WATER VALVE -MAS: MASONRY
-GV: GAS VALVE -UP: UTILITY POLE -LA: LANDSCAPING

NOTES:
1.) THIS SURVEY HAS BEEN PREPARED IN ACCORDANCE WITH N.J.A.C. 13:40-5.
2.) A WRITTEN "WAIVER AND DIRECTION NOT TO SET CORNER MARKERS" HAS BEEN OBTAINED FROM THE ULTIMATE USER PURSUANT TO N.J.A.C. 13:40-5.1(d).
3.) VERTICAL DATUM REFERENCE NGVD 1929

REFERENCES:
1.) DEED BOOK: 5227 PAGE: 328
2.) OFFICIAL TAX MAP OF BOROUGH OF CRANFORD

REV 3.) UPDATE CERTIFICATIONS 11/07/2022
REV 2.) ADD INVERTS 01/16/2018
REV 1.) ADD INVERTS AND PARKING LOT 12/28/2017

TOPOGRAPHIC SURVEY
TAX LOT 18 BLOCK 483
2 CHESTNUT STREET
BOROUGH OF CRANFORD
UNION COUNTY, NEW JERSEY

Proj: BSM16-3549 Scale: 1"= 20' 02/09/2016

BUTLER
SURVEYING & MAPPING, INC.
PROFESSIONAL ENGINEERING AND SURVEYING SERVICES
78 VREELAND AVENUE • MIDLAND PARK • NJ • 07432
PH: (201) 390-0740 • FAX: (201) 857-3695 • E: INFO@BUTLERSM.COM
DIVISION OF CONSUMER AFFAIRS LICENSE NUMBER • 24GA28157600

John J. Butler
JOHN J. BUTLER, PLS
N.J. PROFESSIONAL LAND SURVEYOR LIC. No. 43267

