

NORTH
REF. No. 1

EXISTING TOPOGRAPHY LEGEND			
	TYPE 'B' INLET		UTILITY POLE
	TYPE 'C' INLET		LIGHT POLE
	TYPE 'A' INLET		WALL MOUNTED LIGHT
	MANHOLE (LABELED)		OVERHEAD WIRES
	CLEAN OUT		JUNCTION BOX
	HYDRANT		TRANSFORMER
	WATER VALVE IN BOX OR SERVICE		UTILITY POLE WITH GUY WIRE
	GAS VALVE IN BOX OR SERVICE		TREE (DECIDUOUS) WITH CALIPER
	CURB (TYPE - LABELED)		TREE (CONIFEROUS) WITH CALIPER
	SIGN		INDIVIDUAL SHRUBS & BUSHES
	SANITARY SEWER PIPES (TYPE AND SIZE LABELED)		HEDGES OR BUSHES
	STORM SEWER PIPES (TYPE AND SIZE LABELED)		EDGE OF WOODS
	UNDERGROUND CONDUIT (LABELED)		EXISTING CONTOUR LINE
	WATER LINE		EXISTING SPOT ELEVATION
	GAS LINE MARKOUT		RAIL ROAD TRACKS
	TELEPHONE LINE		GUIDE RAIL (LABELED)
	ELECTRIC LINE		HEADWALL
	FIBER OPTIC LINE		FLARED END SECTION
	CHAIN LINK FENCE		CONC. SIDEWALK
	POST & RAIL FENCE		BRICK SIDEWALK
	RAILING (LABELED)		CENTERLINE
	GATE (SINGLE)		BASELINE
	GATE (DOUBLE)		RIGHT OF WAY LINE
	WELL (LABELED)		
	ROCK WALL OR RIP RAP		
	EXPOSED LEDGE ROCK OR BOULDER		

CERTIFICATION:
I HEREBY CERTIFY TO THE FOLLOWING PARTIES LISTED BELOW, THAT THIS MAP HAS BEEN PREPARED UNDER MY DIRECT SUPERVISION AND IS BASED UPON AN ACTUAL FIELD SURVEY PERFORMED 10-04-2014 AND TO THE BEST OF MY PROFESSIONAL KNOWLEDGE, INFORMATION AND BELIEF, CORRECTLY REPRESENTS THE CONDITIONS FOUND EXCEPT SUCH EASEMENTS NOT DISCLOSED IN THE TITLE REPORT, OR FOUND BELOW THE GROUND.

THIS MAP IS CERTIFIED TO:
- VIBO HOLDINGS, LLC
- BOFFARD HOLDINGS, LLC
- 108 SOUTH AVE E LLC
- 112 SOUTH AVENUE E LLC
- 2 CHESTNUT STREET LLC
- IRON ORE PROPERTIES LLC
- TOWNSHIP OF CRANFORD

-- SET/FOUND PROPERTY MARKER
COLOR KEY:
- BLUE: BOUNDARY LINES, COURSES AND DISTANCES
- GREEN: TAX LOT/BLOCK AND AREA
- RED: BOUNDARY OFFSETS
- BLACK: EXISTING FEATURES

ABBREVIATIONS:
-FC: FENCE CORNER -MH: MANHOLE -PH: PORCH
-DC: DROP CURB -WV: WATER VALVE -MAS: MASONRY
-GV: GAS VALVE -UP: UTILITY POLE -LA: LANDSCAPING

NOTES:
1.) THIS SURVEY HAS BEEN PREPARED IN ACCORDANCE WITH N.J.A.C. 13:40-5.
2.) A WRITTEN "WAIVER AND DIRECTION NOT TO SET CORNER MARKERS" HAS BEEN OBTAINED FROM THE ULTIMATE USER PURSUANT TO N.J.A.C. 13:40-5.1(d).
3.) VERTICAL DATUM REFERENCE NGVD 1929

REFERENCES:
1.) DEED BOOK: 4277 PAGE: 42
DEED BOOK: 4633 PAGE: 41
DEED BOOK: 4534 PAGE: 144
2.) OFFICIAL TAX MAP OF TOWNSHIP OF CRANFORD

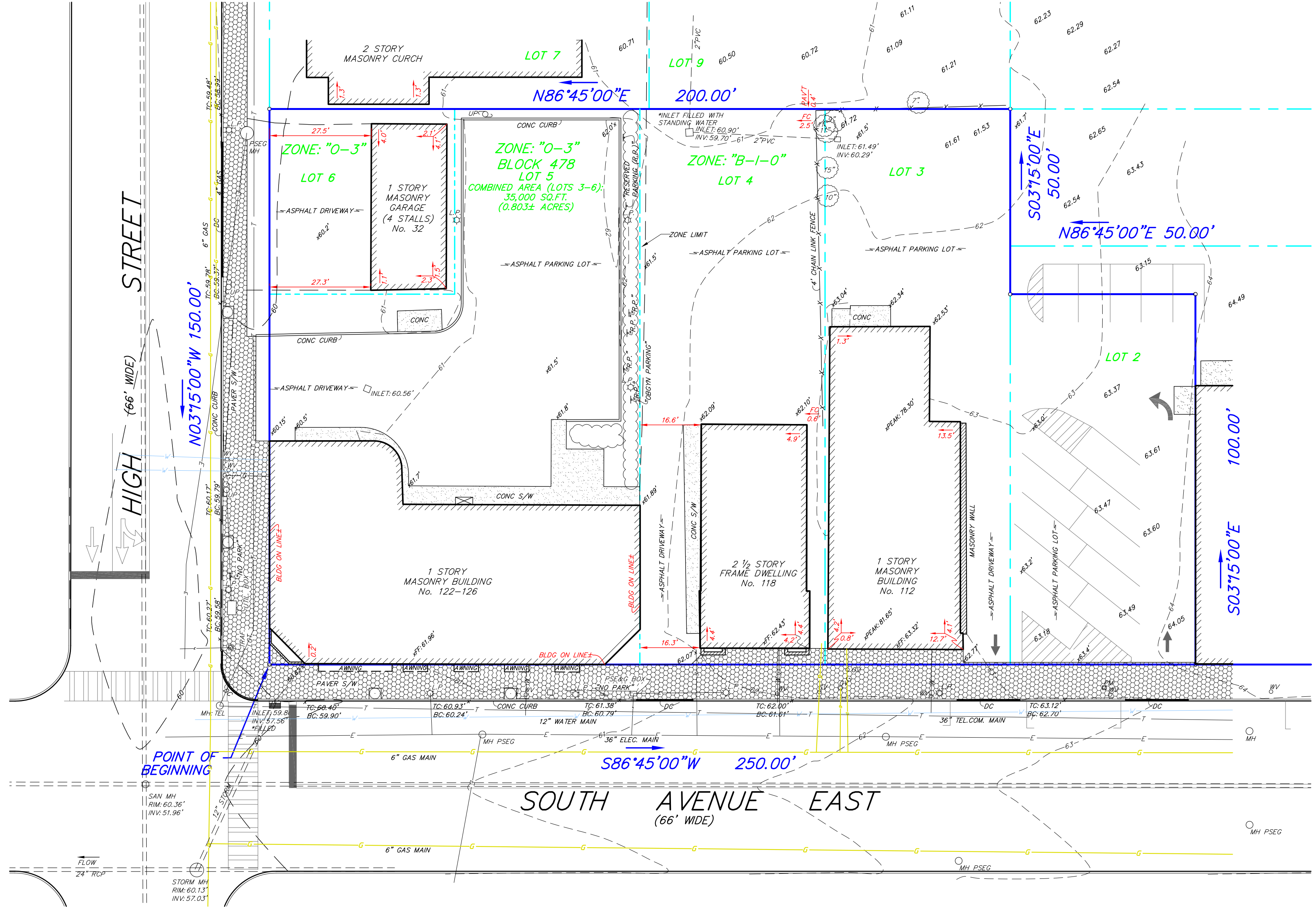
REV 6.) UPDATED CERTIFICATIONS 11/07/2022
REV 5.) UPDATE MH DATUM 02/10/2021
REV 4.) ADD LOT 2 01/07/2021
REV 3.) ADD INVERTS AND UTIL. MARKOUT 01/16/2018
REV 2.) ADD INVERTS AND UTIL. MARKOUT 12/29/2017
REV 1.) ADD INVERTS AND UTIL. MARKOUT 04/13/2016

TOPOGRAPHIC SURVEY
TAX LOTS 2, 3, 4, 5 & 6 BLOCK 478
108-126 SOUTH AVENUE EAST
& 32 HIGH STREET
TOWNSHIP OF CRANFORD
UNION COUNTY, NEW JERSEY

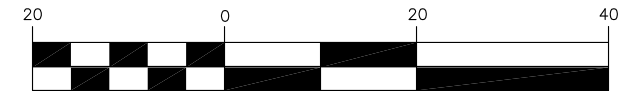
Proj: BSM14-2784 Scale: 1" = 20' 02/09/2016

BUTLER
SURVEYING & MAPPING, INC.
PROFESSIONAL ENGINEERING AND SURVEYING SERVICES
177 FRANKLIN AVENUE • MIDLAND PARK • NJ • 07432
PH: (201) 390-0740 • FAX: (201) 857-3695 • E: INFO@BUTLERSM.COM
DIVISION OF CONSUMER AFFAIRS LICENSE NUMBER • 24GA28157600

John J. Butler
JOHN J. BUTLER, PLS
N.J. PROFESSIONAL LAND SURVEYOR LIC. No. 43267



GRAPHIC SCALE



(IN FEET)
1 inch = 20 ft.