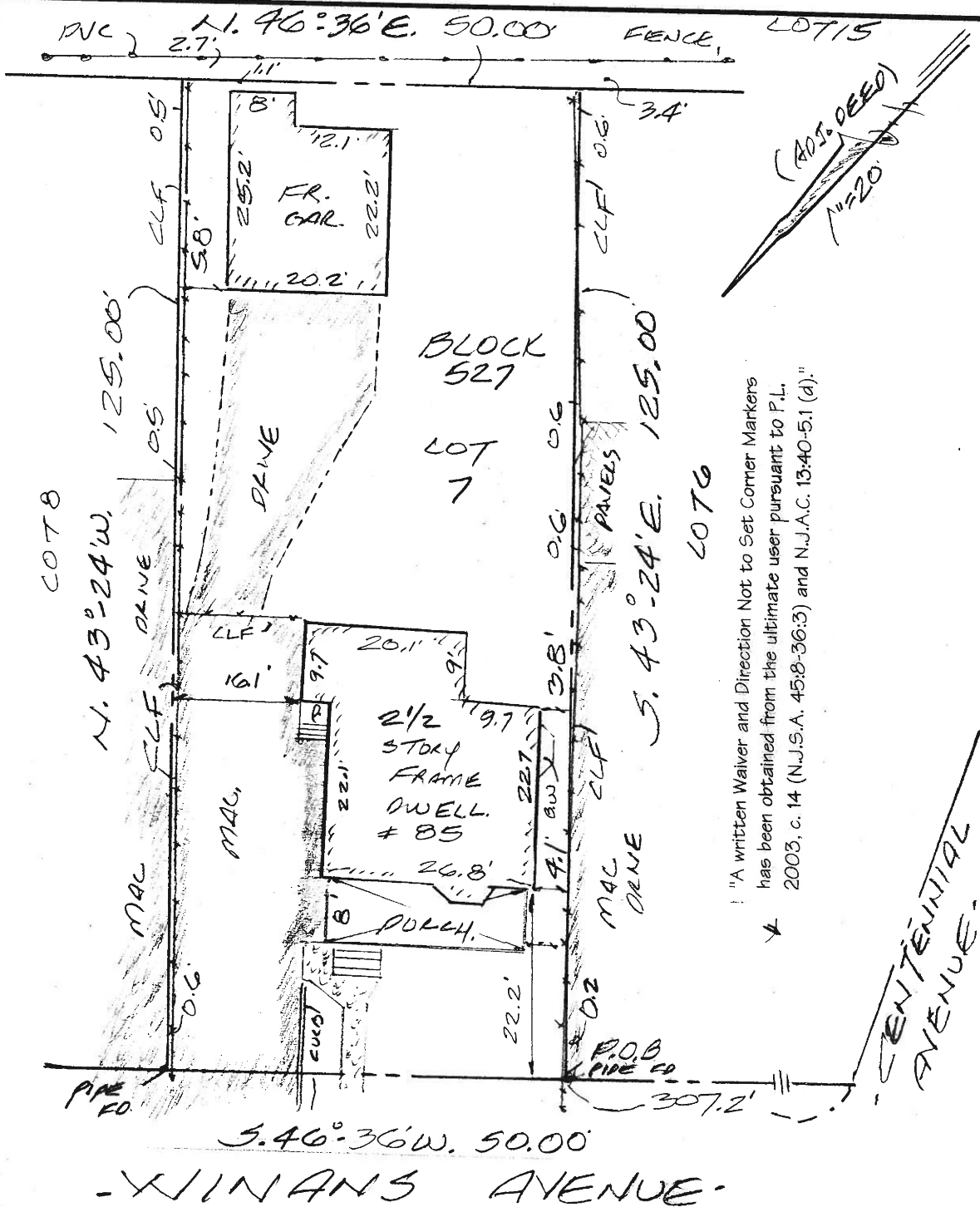


REFERENCES: DEED BK. 5880 P. 914;  
 BK. 5964 P. 23; BK. 6214 P. 930;  
 CRANFORD TWP. TAX MAPS;



"A written Waiver and Direction Not to Set Corner Markers has been obtained from the ultimate user pursuant to P.L. 2003, c. 14 (N.J.S.A. 45:8-36.3) and N.J.A.C. 13:40-5.1 (d)."



Brunswick Surveying East Incorporated  
 Licensed Land Surveying  
 61 Stelton Road Piscataway, New Jersey 08854  
 Phone (732) 752-0821 Fax (732) 752-0101

**PLAN OF SURVEY**  
 Cold River Realty Corp.  
 Township of Cranford  
 Union County, New Jersey  
 Block 527 Lot 7

Certificate of Authorization No. 24GA28273800

Drawn by RMH Job No. 339-21 Date 3/19/2021  
 Checked by BH Sheet No. \_\_\_\_\_ Scale 1"=20'

I hereby certify this survey to:  
 Cold River Realty Corp.; Two Rivers Title Company, LLC; Old Republic National Title Insurance Company; Adam M. Brown, Esq.;

**ROBERT M. HORVATH**  
 New Jersey Land Surveyor No. 27476

TITLE# TRT2126023