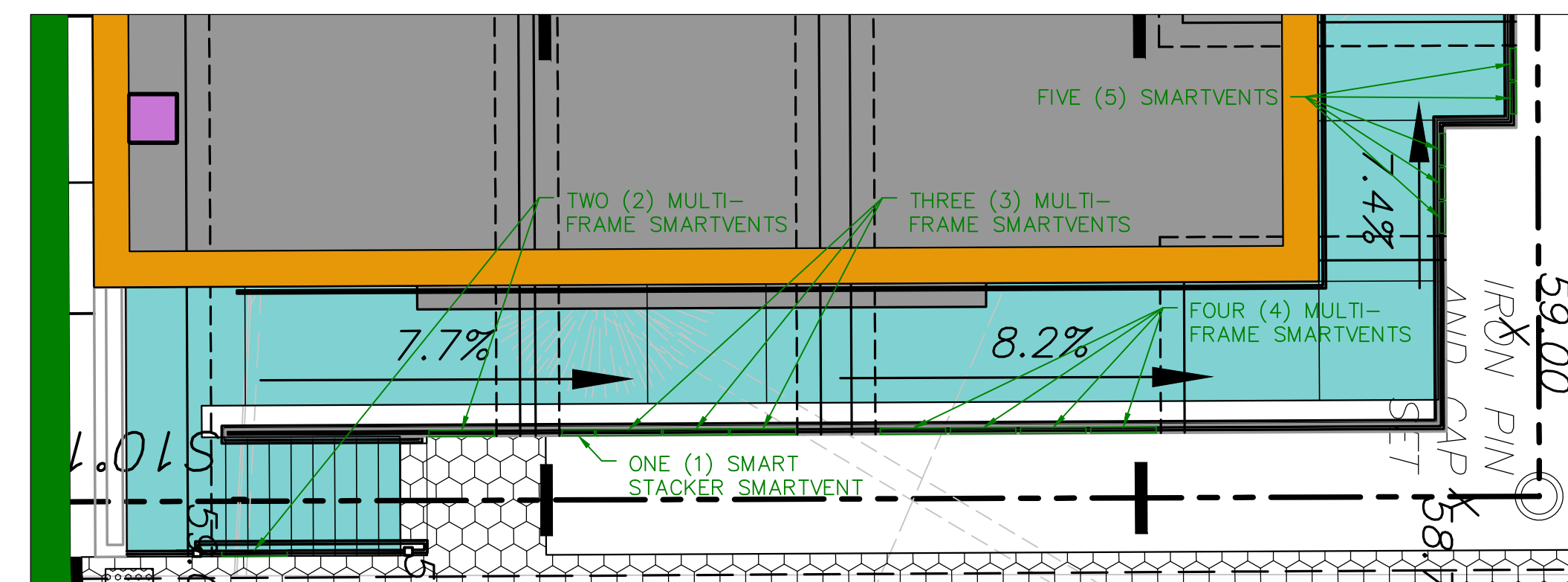


VOLUME TABLE

	AREA (SF)	AVERAGE WATER DEPTH (FT)	FILL VOLUME (CF)	FILL VOLUME (CY)
STAIR 1	88.4±	0.7±	61.9±	2.29±
STAIR 2	105.3±	1.15±	121.1±	4.49±
STAIR 3	118.0±	1.65±	194.7±	7.21±
STAIR 4	118.0±	1.65±	194.7±	7.21±
STAIR 5	108.3±	2.15±	232.8±	8.62±
ADA RAMP AND PLANTERS	485.5±	2.50±	1,213.8±	44.95±
BUILDING PERIMETER WALLS	670.7±	1.20±	804.8±	29.81±
BUILDING COLUMNS	48.0±	1.10±	52.8±	1.96±
TOTAL			2,876.6±	106.54±

VOLUME GAINED BY SITE GRADING BASED ON CROSS SECTIONS (INCLUDING PARKING DECK AND POROUS PAVEMENT AREA)	CULVERTS WITHIN CROSS SECTIONS 256.0 CF FILL (SEE SHEET 2)	+ CULVERTS BEYOND CROSS SECTIONS 3,319.5 CF CUT	3,063.5 CF CUT	113.5 CY CUT
---	---	---	----------------	--------------

THE PROJECT GENERATES AN OVERALL VOLUME GAIN WITHIN THE FLOOD HAZARD AREA OF 187 CF OR 6.9 CY



SMARTVENT LAYOUT
SCALE: 1" = 6'

No.	Date	Revision	Revised By	Checked By

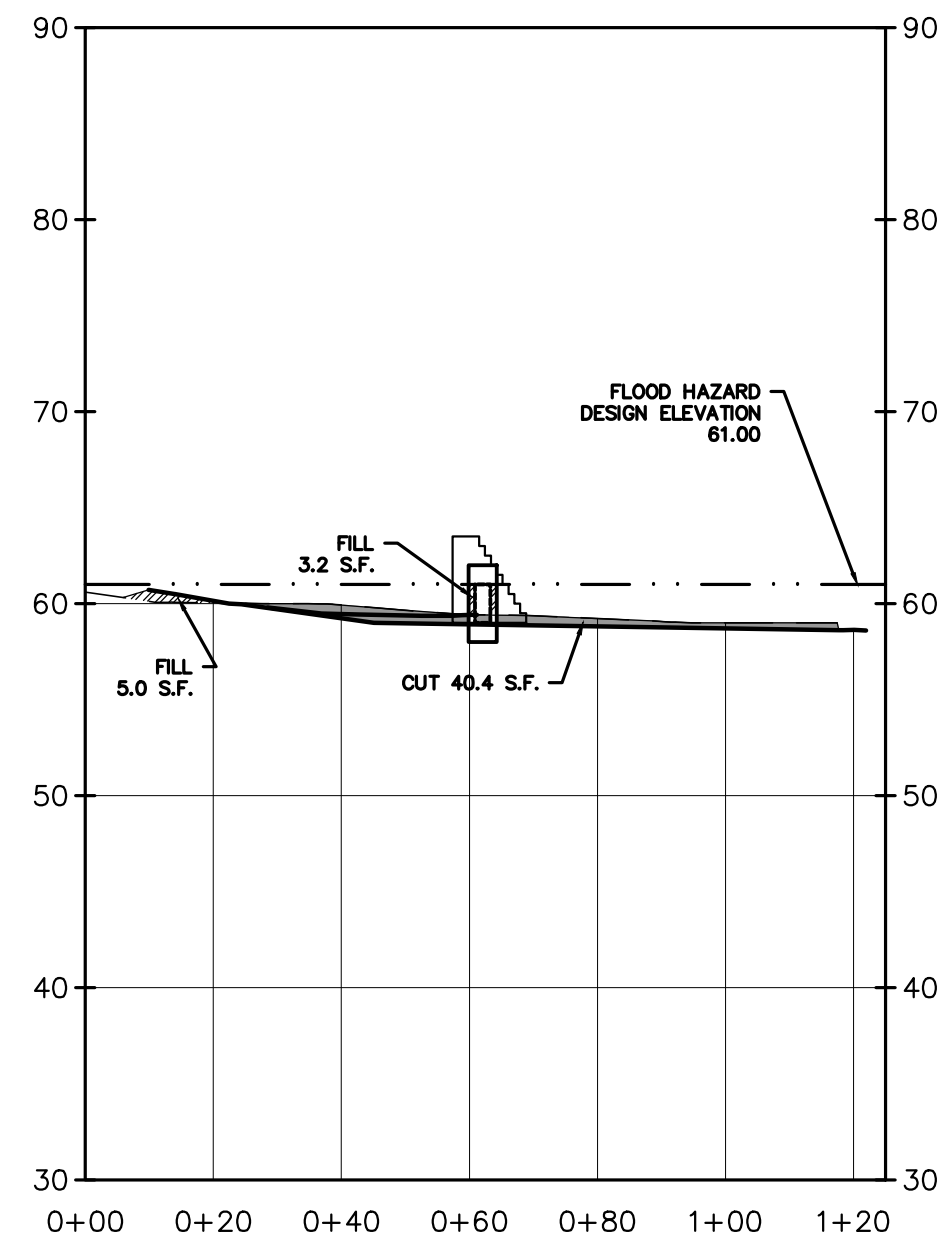
SCALE IN FEET



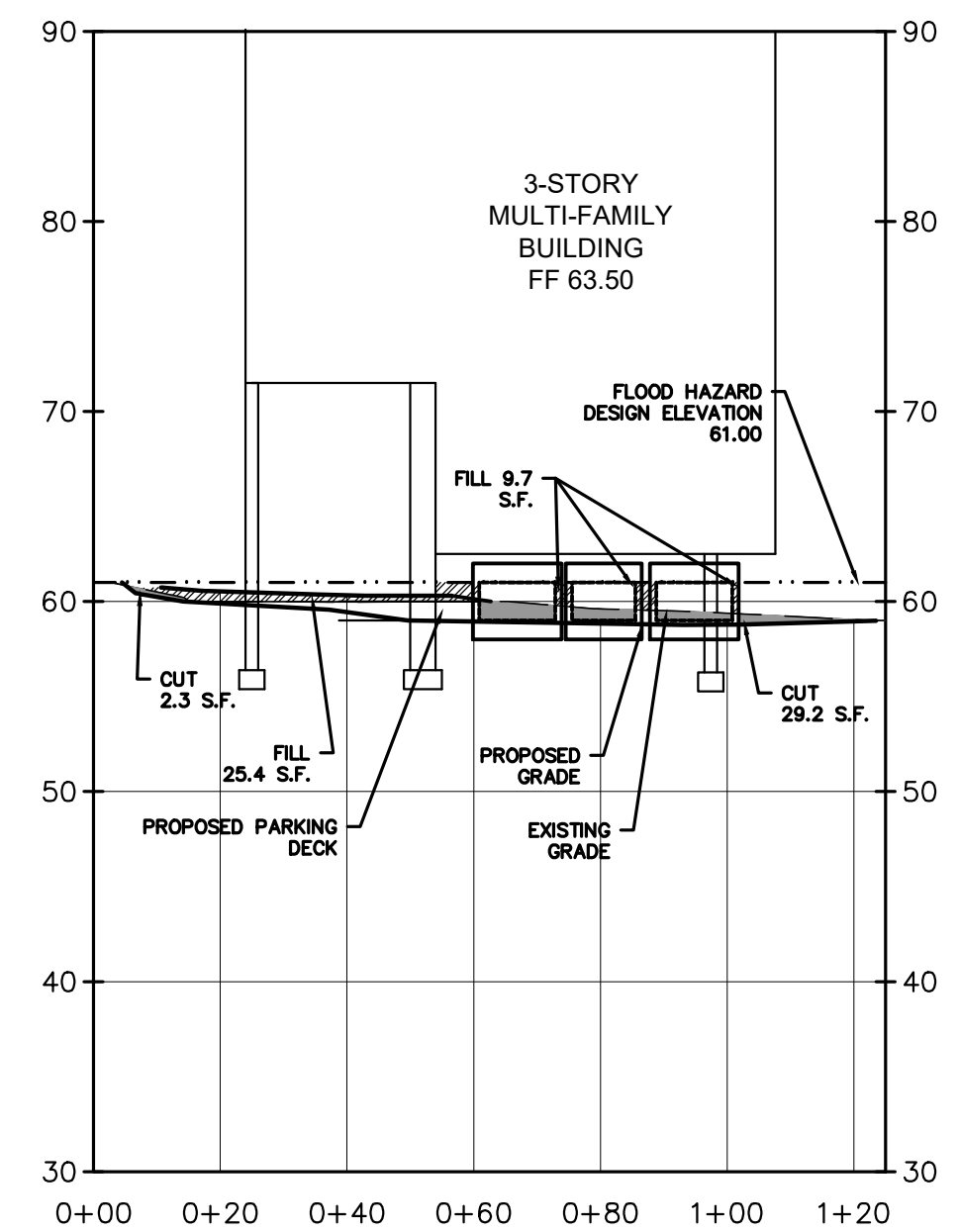
BAHRAM FARZANEH, PE, PP
PROFESSIONAL ENGINEER, N.J. LIC. No. 24GE03454800

CROSS SECTIONS AND VOLUME CALCULATIONS FOR PRELIMINARY AND FINAL SITE PLAN FOR 201 WALNUT AVENUE BLOCK 484 LOT 19.01 TOWNSHIP OF CRANFORD UNION COUNTY, NEW JERSEY			
DATE: 1/29/2021	DESIGNED BY: MS	SCALE: 1" = 20'	PROJECT NUMBER: 16377.001
DRAWN BY: MS	CHECKED BY: BF	FIELD BOOK	SHEET: 1 of 2

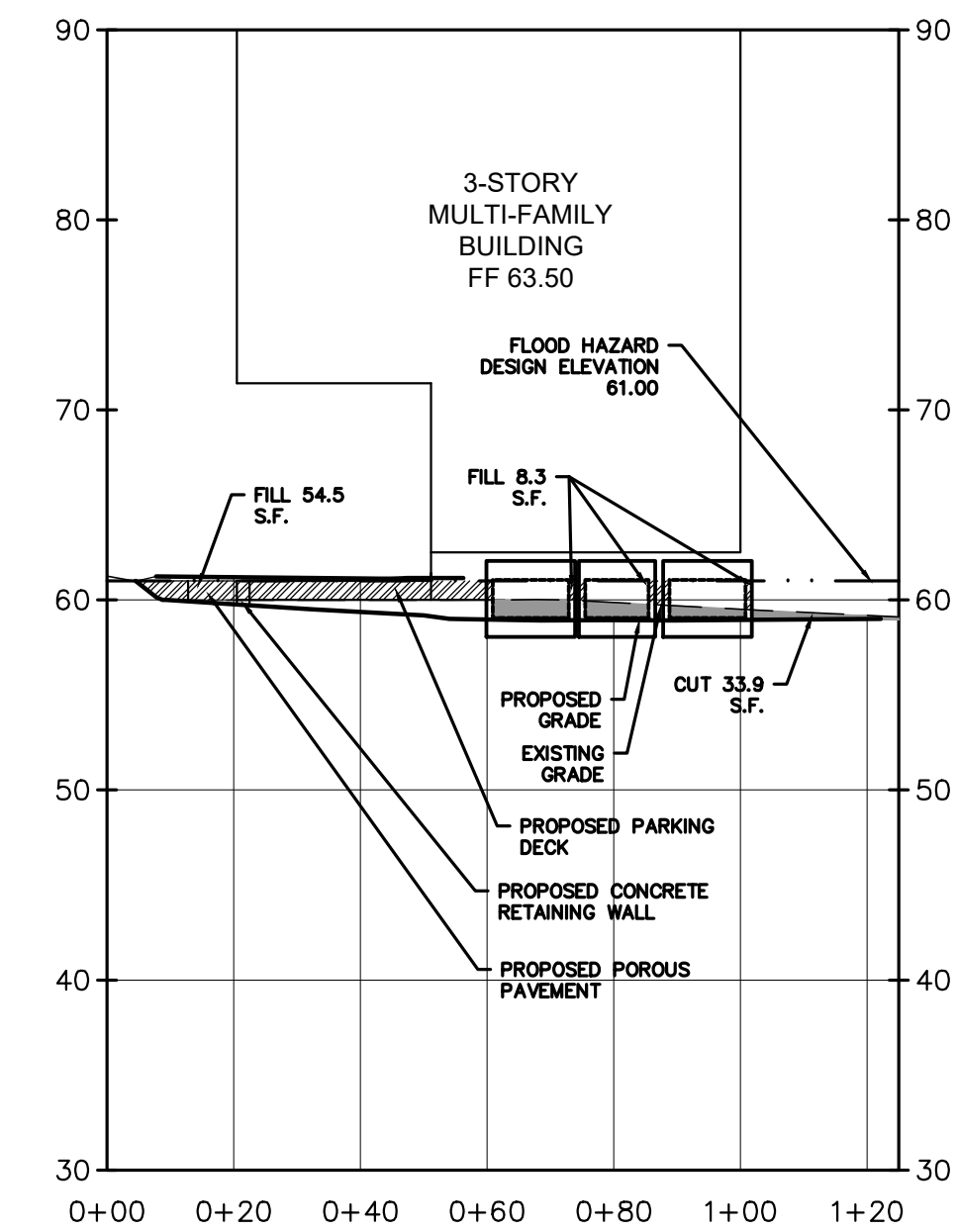
NJDEP ELECTRONIC APPROVAL STAMP



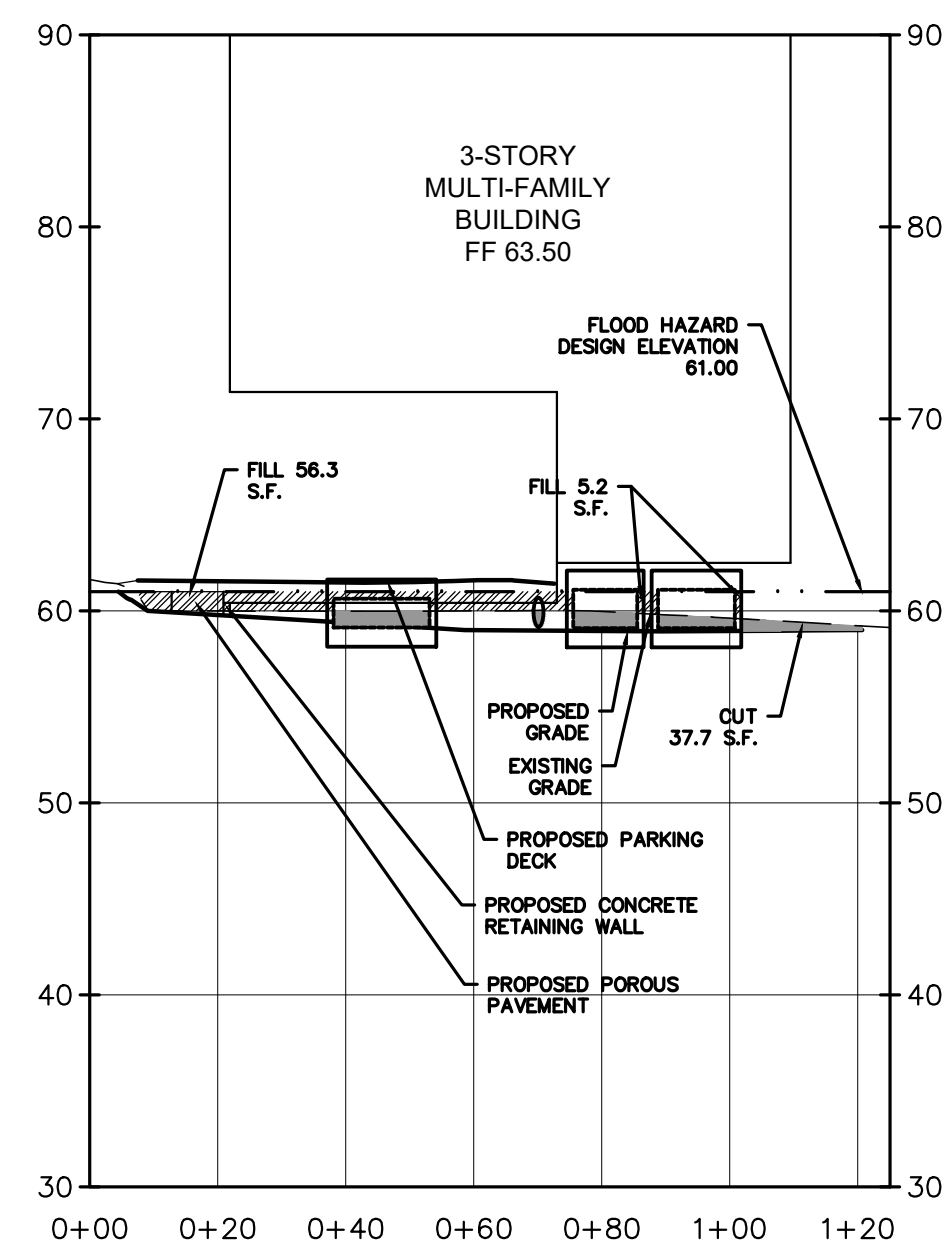
SECTION 0+00
SCALE: 1" = 30' HORIZONTAL
1" = 10' VERTICAL



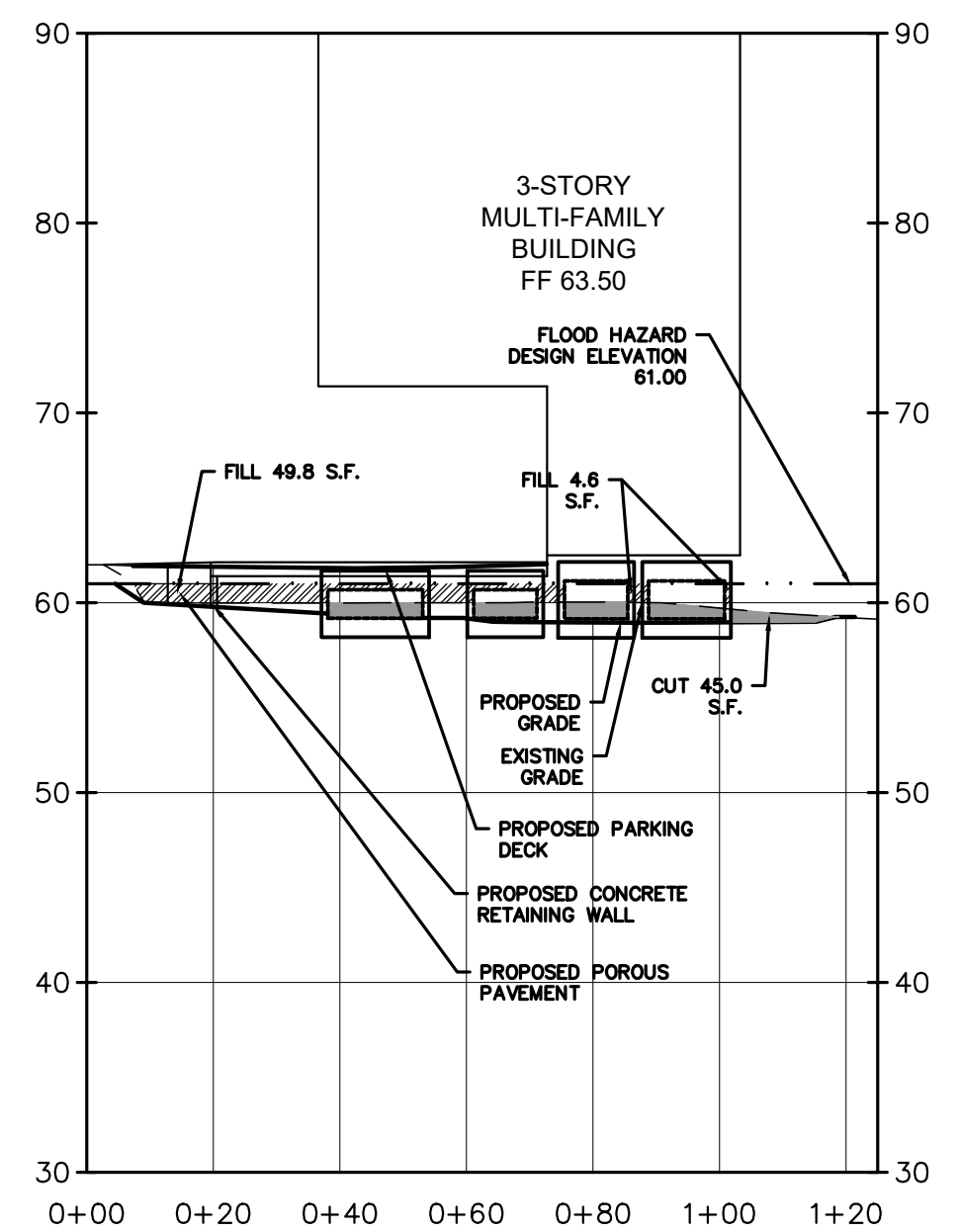
SECTION 0+20
SCALE: 1" = 30' HORIZONTAL
1" = 10' VERTICAL



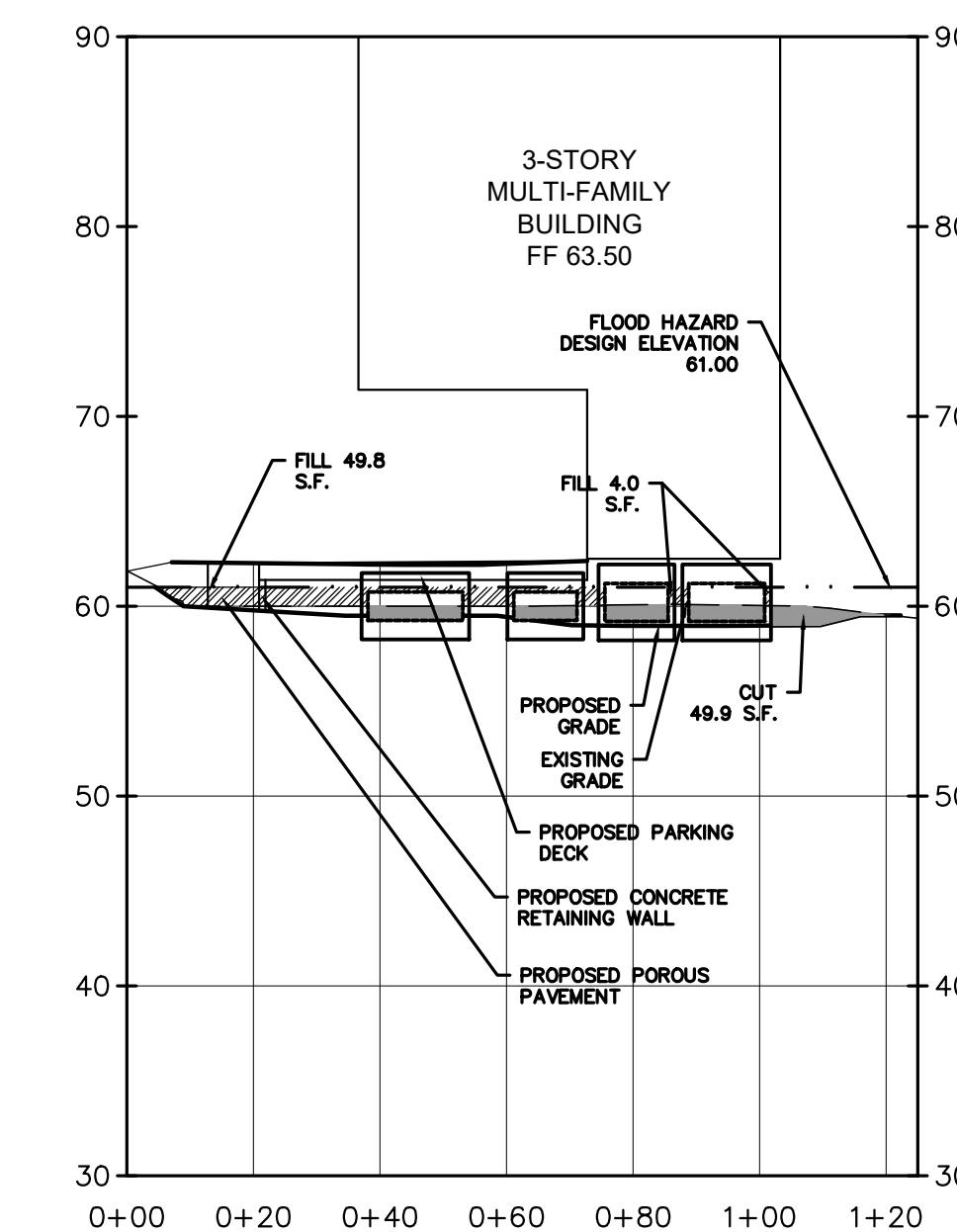
SECTION 0+40
SCALE: 1" = 30' HORIZONTAL
1" = 10' VERTICAL



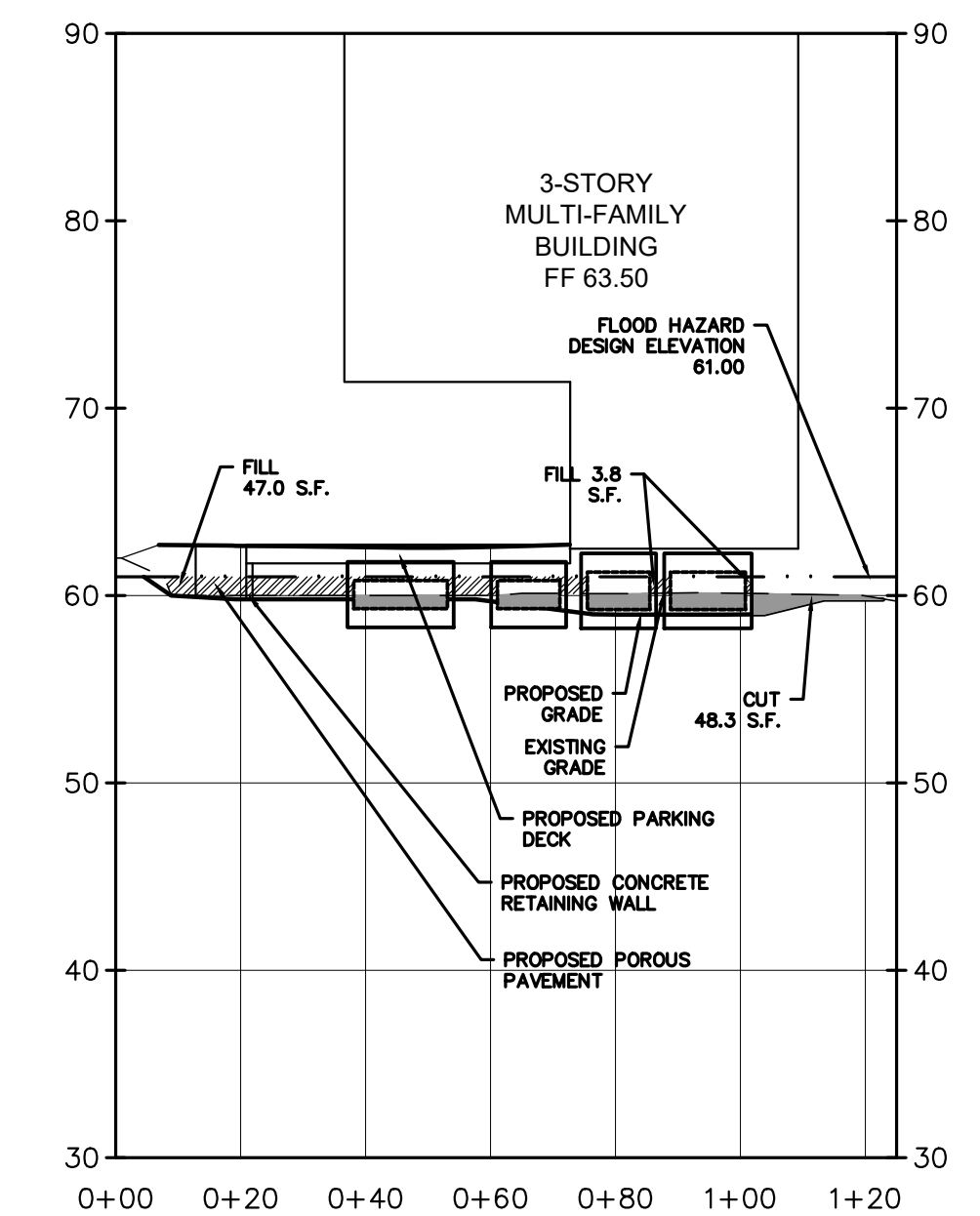
SECTION 0+60
SCALE: 1" = 30' HORIZONTAL
1" = 10' VERTICAL



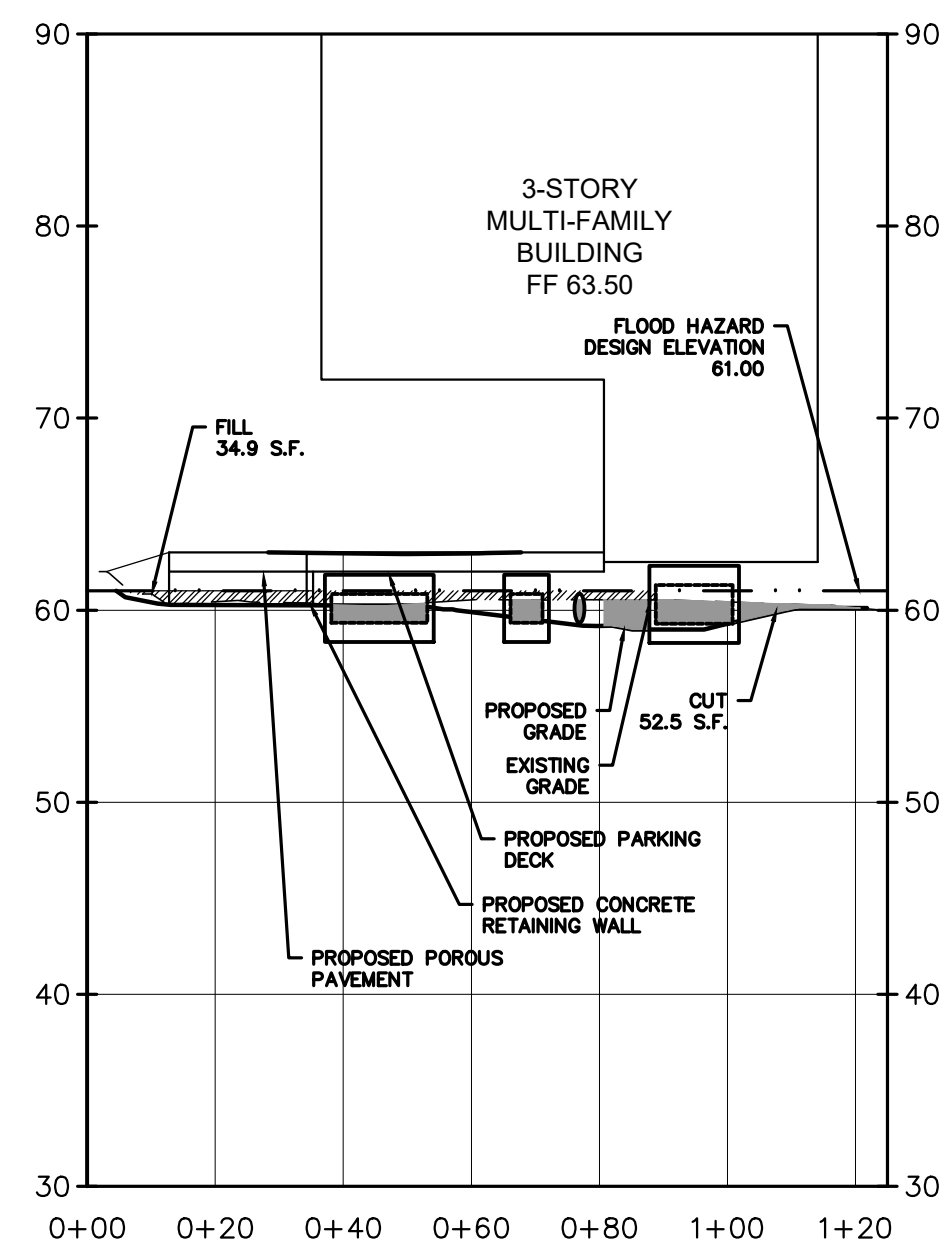
SECTION 0+80
SCALE: 1" = 30' HORIZONTAL
1" = 10' VERTICAL



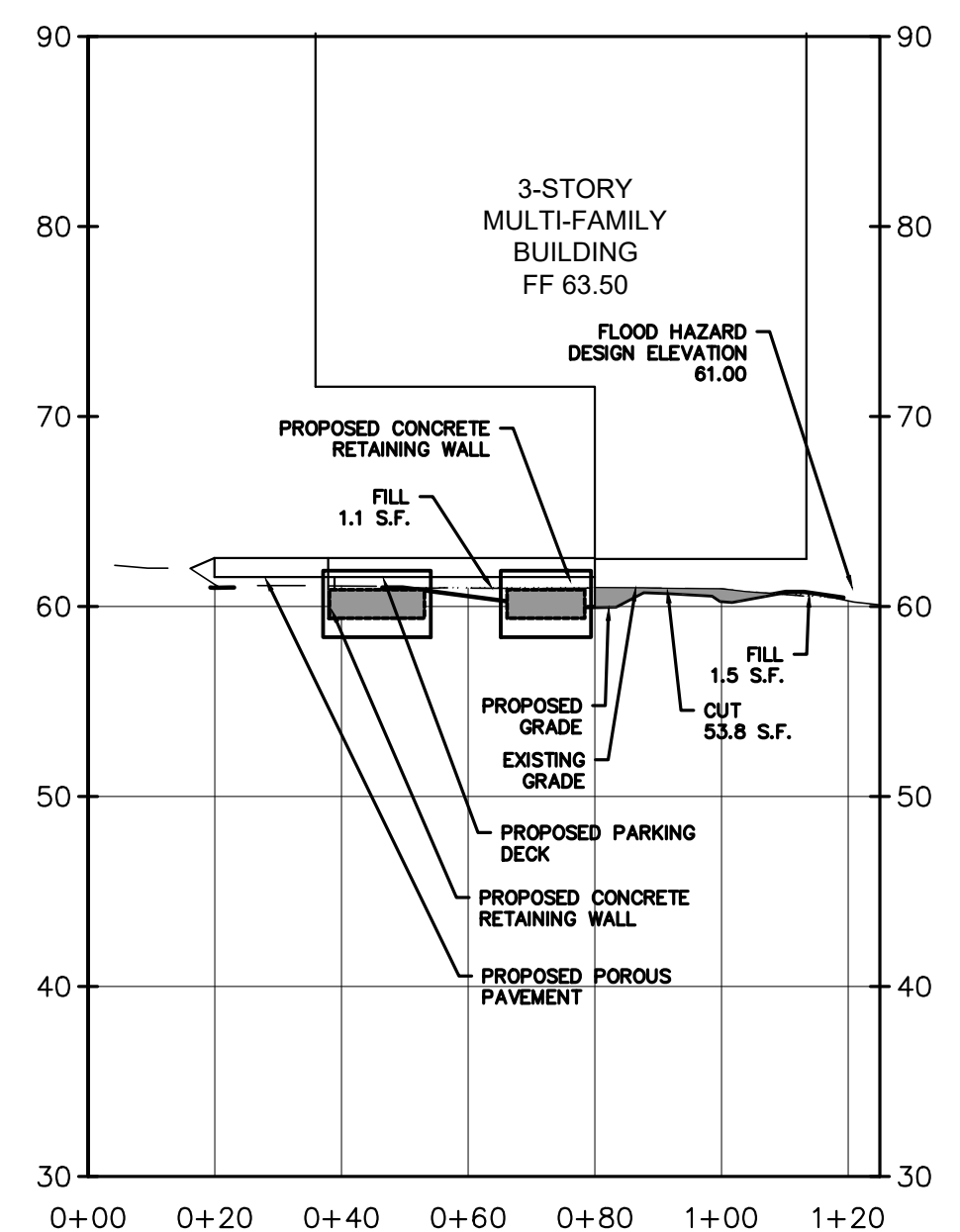
SECTION 1+00
SCALE: 1" = 30' HORIZONTAL
1" = 10' VERTICAL



SECTION 1+20
SCALE: 1" = 30' HORIZONTAL
1" = 10' VERTICAL



SECTION 1+40
SCALE: 1" = 30' HORIZONTAL
1" = 10' VERTICAL



SECTION 1+60
SCALE: 1" = 30' HORIZONTAL
1" = 10' VERTICAL

	FIRST SECTION CUT	SECOND SECTION CUT	FIRST SECTION FILL	SECOND SECTION FILL	AVERAGE CUT	AVERAGE FILL	TOTAL CUT	TOTAL FILL
SECTION 0+00 TO 0+20	40.4	31.5	8.2	35.1	36.0	21.7	719.0	433.0
SECTION 0+20 TO 0+40	31.5	33.9	35.1	62.8	32.7	49.0	654.0	979.0
SECTION 0+40 TO 0+60	33.9	37.7	62.8	61.5	35.8	62.2	716.0	1,243.0
SECTION 0+60 TO 0+80	37.7	45.0	61.5	54.4	41.4	58.0	827.0	1,159.0
SECTION 0+80 TO 1+00	45.0	49.9	54.4	53.8	47.5	54.1	949.0	1,082.0
SECTION 1+00 TO 1+20	49.9	48.3	53.8	50.8	49.1	52.3	982.0	1,046.0
SECTION 1+20 TO 1+40	48.3	52.5	50.8	34.9	50.4	42.9	1,008.0	857.0
SECTION 1+40 TO 1+60	52.5	53.8	34.9	2.6	53.2	18.8	1,063.0	375.0
TOTAL							6,918.0	7,174.0

NET FILL 256.0 C.F. = 9.5 C.Y.

No.	Date	Revision	Revised By	Checked By
		AS SHOWN		

SCALE IN FEET

FPA
FRENCH & PARRELLO ASSOCIATES

Corporate Office:
1800 Route 34, Suite 101
Wall, New Jersey 07719
732.312.9800
FPAengineers.com

New Jersey • New York • Pennsylvania • Georgia

BAHRAM FARZANEH, PE, PP
PROFESSIONAL ENGINEER, NJ LIC. No. 24GE03454800

CROSS SECTIONS AND VOLUME CALCULATIONS

FOR
PRELIMINARY AND FINAL SITE PLAN
FOR
201 WALNUT AVENUE
BLOCK 484 LOT 19.01

TOWNSHIP OF GRANFORD
UNION COUNTY NEW JERSEY

DATE: 1/29/2021	DESIGNED BY: MS	SCALE: AS SHOWN	PROJECT NUMBER: 16377.001
DRAWN BY: MS	CHECKED BY: BF	FIELD BOOK	SHEET: 2 of 2

C:\BKF\16300\16377 - 201 Walnut Ave\SCADD\DWG\16377 - CUT-FILL.dwg CROSS SECTIONS