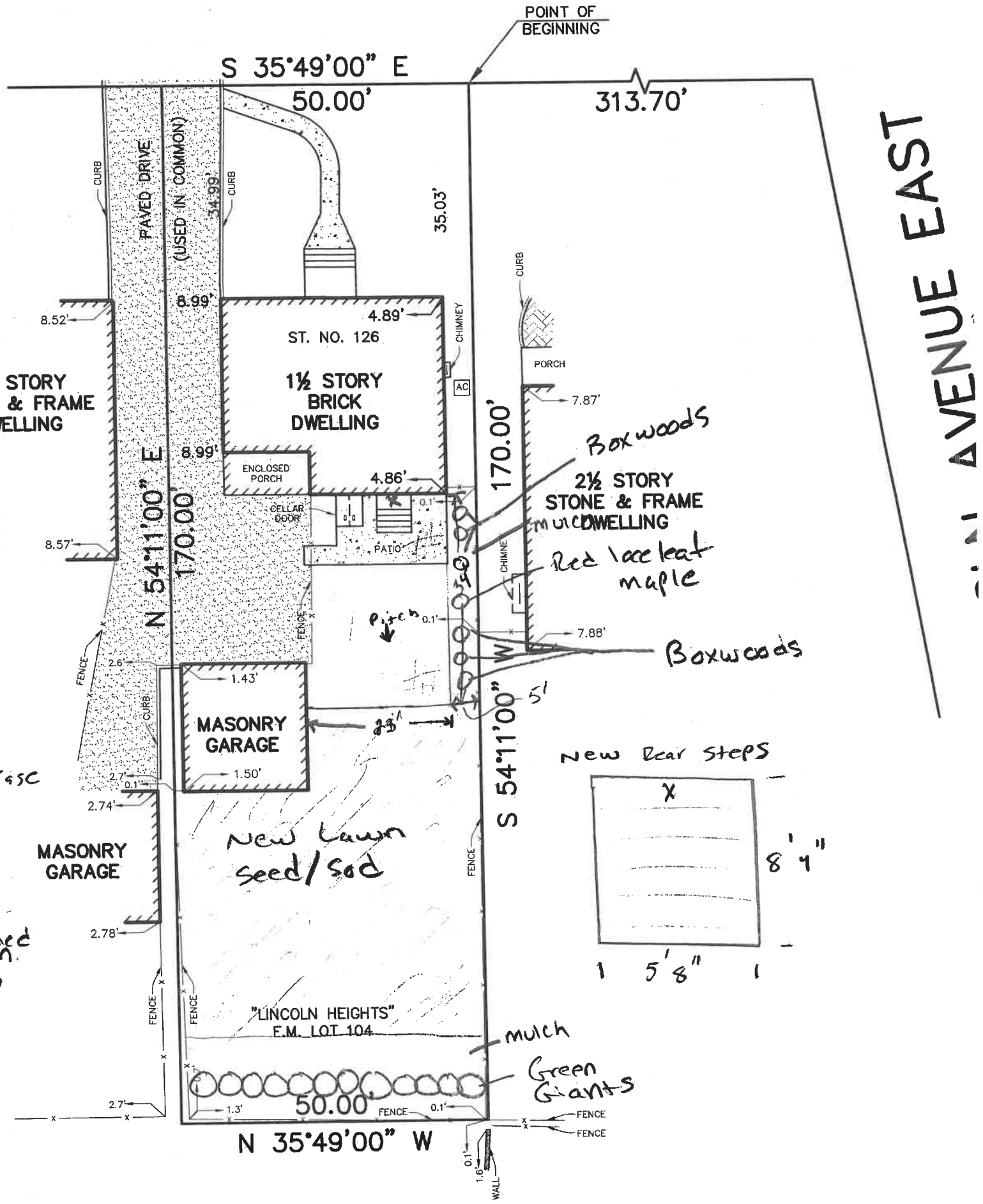
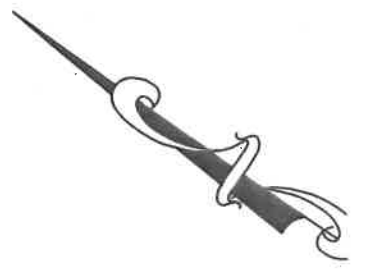
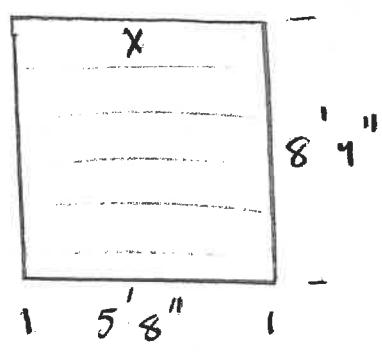


THOMAS STREET

(A.K.A. THOMAS AVENUE)
(80' RIGHT OF WAY)



Scope of work:
 Demo existing rear staircase
 and concrete patio.
 Rebuild new rear
 Staircase 8'4" x 5'8"
 Install new Paver
 patio 610.0278 sq ft pitched
 towards plantbeds/lawn.
 Plant 6 Boxwoods,
 1 Red laceleaf maple
 12 Green Giants.
 Plant new sod/seed
 Lawn/Garden Square
 footage (Rear Property)
 3270 sq ft



IN WAIVER AND DIRECTION NOT TO SET CORNER MARKERS HAS BEEN OBTAINED FROM
 TIME USER PURSUANT TO P.L.2003,c.14(C45:8-36.3) AND N.J.A.C. 13:40-5.1(d).

