

UTILITIES/AUTHORITIES	
<u>GAS SERVICE</u> ELIZABETHTOWN GAS COMPANY 520 GREEN LANE, UNION, NJ 7083 PHONE: (908) 662-8321 CONTACT: GREGORY J. BALINT	
<u>CABLE SERVICE</u> COMCAST CABLEVISION OF NJ 800 RAHWAY AVENUE, UNION, NJ 07083 PHONE: (908) 851-2258 CONTACT: GEORGE PALYCA	
<u>ELECTRIC SERVICE</u> PUBLIC SERVICE ELECTRIC AND GAS COMPANY 472 WESTON CANAL ROAD, SOMERSET, NJ 08873 PHONE: (732) 764-3067 CONTACT: JOHN GRABENSTEIN	
<u>WATER SERVICE</u> NEW JERSEY AMERICAN WATER COMPANY 1341 NORTH AVENUE, PLAINFIELD, NJ 07061 PHONE: (908) 791-3456 CONTACT: MICHAEL F. BANGE	
<u>TELEPHONE SERVICE</u> VERIZON COMMUNICATIONS 290 W. MT PLEASANT AVENUE, LIVINGSTON, NJ 07039 PHONE: (973) 422-5156 CONTACT: DARREN CRAY	
<u>SEWER SERVICES</u> TWP OF CRANFORD SEWER DEPARTMENT ROUND HOUSE, 364 NORTH AVENUE PHONE: (908) 709-7217 CONTACT: ERIK HASTRUP	
<u>RAHWAY VALLEY SEWERAGE AUTHORITY</u> 1050 EAST HAZELWOOD AVENUE, RAHWAY, NJ 07065 PHONE: (732) 388-0868 CONTACT: JOHN BUONOCORE	
TOWNSHIP OF CRANFORD	
KATHLEEN MILLER PRUNTY, MAYOR BRIAN ANDREWS, DEPUTY MAYOR/COMMISSIONER THOMAS H. HANNEN, JR., COMMISSIONER JASON GAREIS, COMMISSIONER MARY O'CONNOR, COMMISSIONER PATRICIA DONAHUE, TOWNSHIP CLERK JAMIE CRYAN, TOWNSHIP ADMINISTRATOR	
INDEX OF SHEETS	
SHT. No.	DESCRIPTION
1	COVER
2	GENERAL NOTES & QUANTITIES
3 - 6	EXISTING CONDITIONS PLAN
7 - 10	DIMENSION PLAN
11 - 14	GRADING & DRAINAGE PLAN
15	SOIL EROSION & SEDIMENT CONTROL DETAILS
16 - 18	CONSTRUCTION DETAILS
19 - 22	NJDOT TRAFFIC CONTROL DETAILS
23 - 26	NJDOT ADA RAMP CONSTRUCTION DETAILS

CONSTRUCTION PLANS
FOR
2020 VARIOUS ROADWAY IMPROVEMENTS
MAKATOM DRIVE, MORNINGSIDE PLACE, INDIAN
SPRING ROAD, & ORCHARD STREET
TOWNSHIP OF CRANFORD
UNION COUNTY, NEW JERSEY

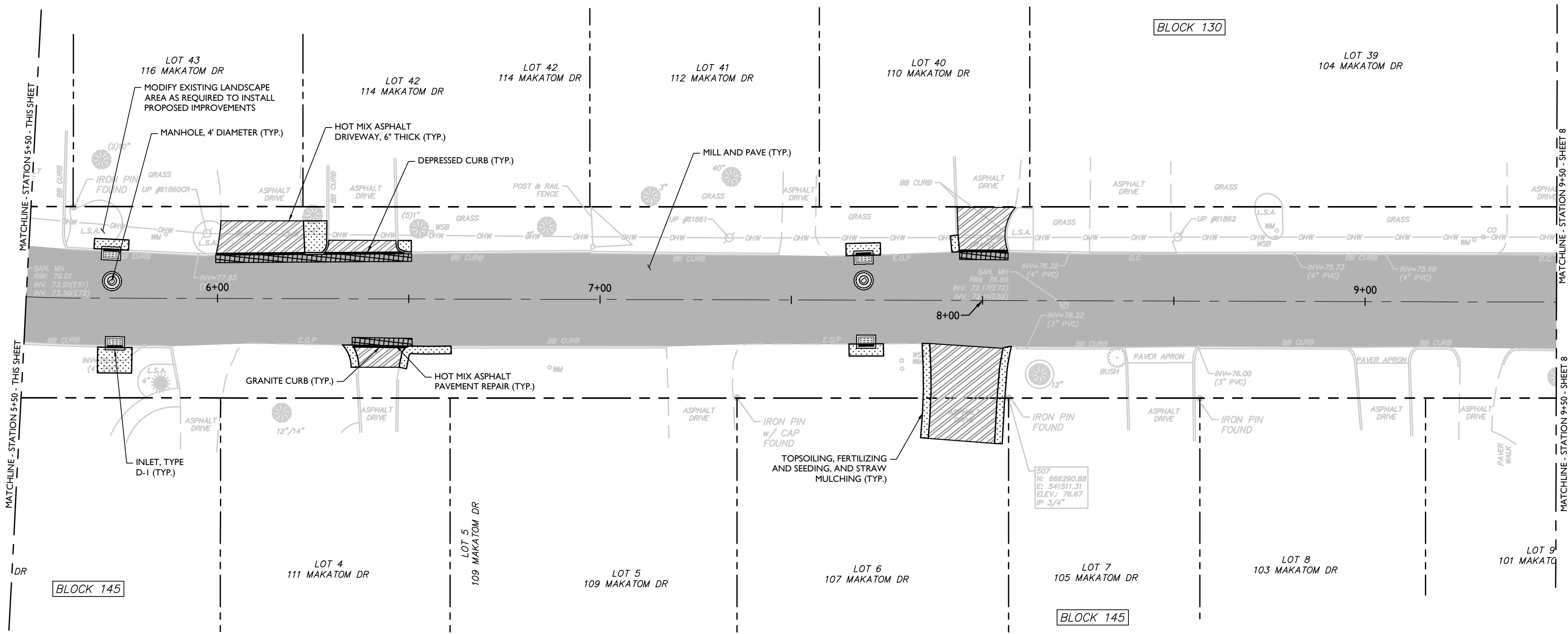
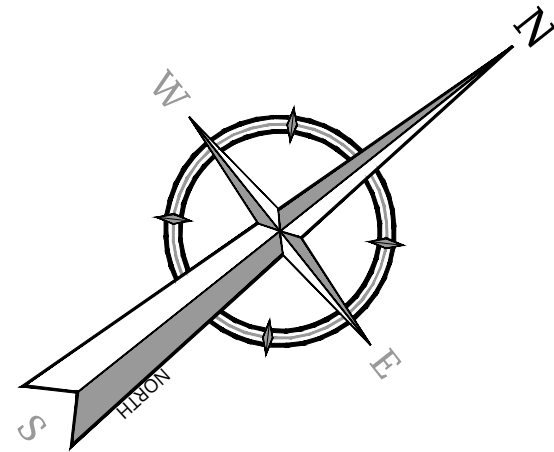
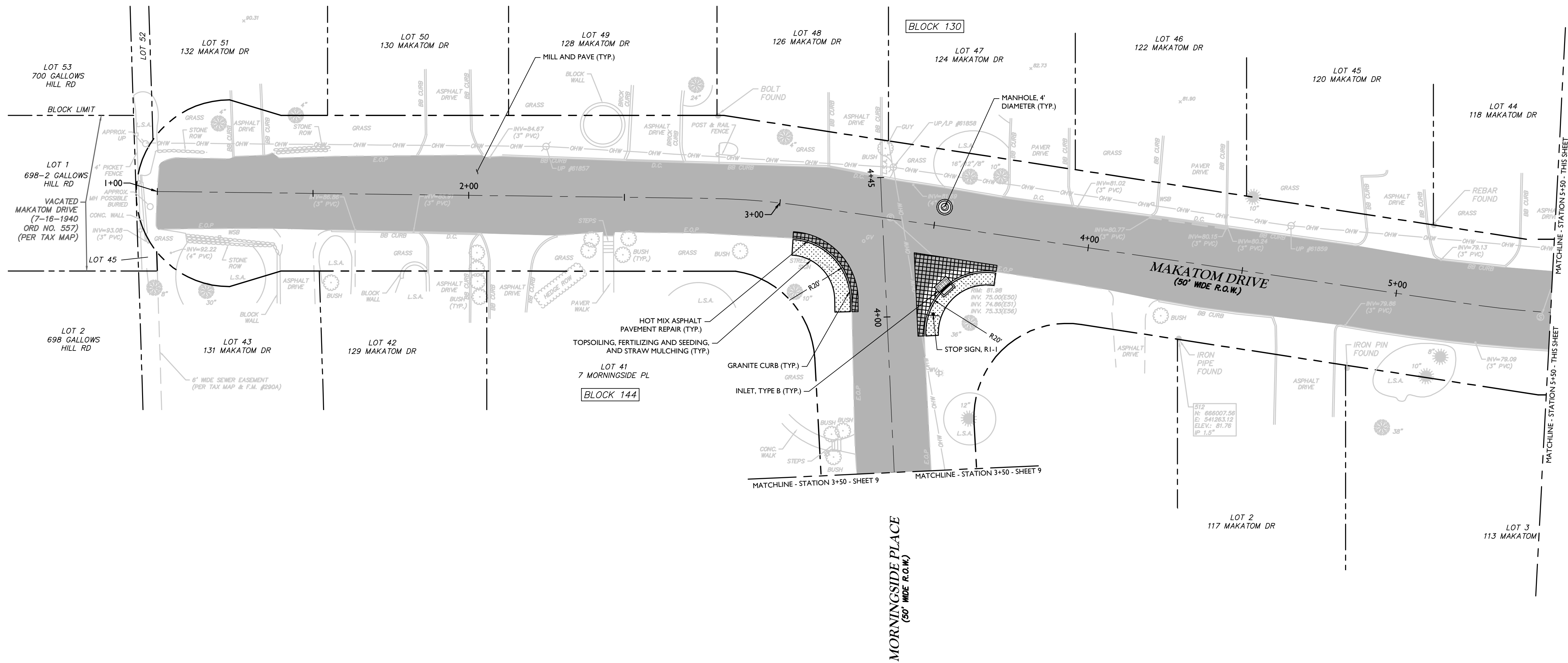
A detailed key map of a residential area in Cranford, New Jersey. The map shows a grid of streets. A central area, including Makatom Drive, Indian Spring Road, and a portion of Orchard Street, is shaded with diagonal lines and labeled 'PROJECT LOCATION' with a leader line. Other streets shown include La Corte Terrace, Gallows Hill Road, Cornell Road, Dartmouth Road, Birch Street, Brookside, Waverly Pl, Annet Pl, Hillside Pl, Oakeside Place, and Harvard Road. A scale bar at the bottom right indicates a scale of 1 inch = 200 feet, with markings for 0, 100, and 200 feet. A north arrow is located in the upper right corner of the map area.

KEY MAP

NEW JERSEY DEPARTMENT OF TRANSPORTATION STANDARD
SPECIFICATIONS 2019 WITH AMENDMENTS THERE TO SHALL GOVERN

[illegible]

C:\CDT02\Engineering\24a\Plan\CLAYT.dwg(C-LAYOUT) By: PCOLCHE



LEGEND

- MILL AND PAVE
- HOT MIX ASPHALT PAVEMENT REPAIR
- HOT MIX ASPHALT DRIVEWAY, 6" THICK
- RESET PAVER WALKWAY
- TOPSOILING, FERTILIZING AND SEEDING, AND STRAW MULCHING



SCALE: 1" = 20'

Colliers

Engineering
& Design

www.colliersengineering.com

Copyright © 2021, Colliers Engineering & Design All Rights Reserved. This drawing and all the information contained herein is authorized for use only by the party for whom the services were contracted or to whom it is certified. This drawing may not be copied, reused, disclosed, distributed or relied upon for any other purpose without the express written consent of Colliers Engineering & Design.

Doing Business as MASER CONSULTING



PROTECT YOURSELF
ALL STATES REQUIRE NOTIFICATION OF EXCAVATIONS, DESIGNERS, OR ANY PERSON PREPARING TO DISTURB THE EARTH'S SURFACE ANYWHERE IN ANY STATE
Know what's below.
Call before you dig.
FOR STATE SPECIFIC DIRECT PHONE NUMBERS VISIT: WWW.CALL811.COM

REV. DATE. DRAWN BY. DESCRIPTION.

Carl P. O'Brien

NEW JERSEY LICENSED PROFESSIONAL ENGINEER
LICENSE NUMBER: GE45154
COLLIERS ENGINEERING & DESIGN, INC.
N.J. C.O.A. #: 24GA27986500

CONSTRUCTION PLANS

FOR
2020 VARIOUS
ROADWAY
IMPROVEMENTS

MAKATOM DRIVE,
MORNINGSIDE PLACE,
INDIAN SPRING ROAD, &
ORCHARD STREET

TOWNSHIP OF CRANFORD
UNION COUNTY
NEW JERSEY

Colliers

Engineering
& Design

MT. ARLINGTON

400 Valley Road,
Suite 304

Mt. Arlington, NJ 07856

Phone: 973.398.3110

COLLIERS ENGINEERING & DESIGN,
INC. DOING BUSINESS AS MASER
CONSULTING

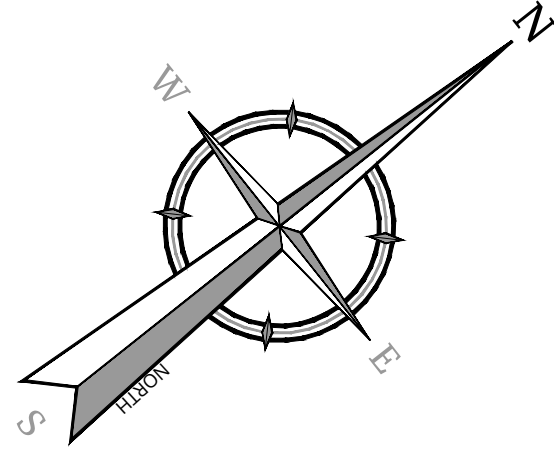
SCALE: AS SHOWN. DATE: 1/8/21. DRAWN BY: PPC. CHECKED BY: BRP.
PROJECT NUMBER: CDT027. DRAWING NAME: C-LAYT.

DIMENSION PLAN

SHEET NUMBER:

7 of 26

NOTE: DO NOT SCALE DRAWINGS FOR CONSTRUCTION.



Colliers

Engineering
& Design

www.colliersengineering.com

Copyright © 2021, Colliers Engineering & Design All Rights Reserved. This drawing and all the information contained herein is authorized for use only by the party for whom the services were contracted or to whom it is certified. This drawing may not be copied, reused, disclosed, distributed or relied upon for any other purpose without the express written consent of Colliers Engineering & Design.

Doing Business as **MASER CONSULTING**



PROTECT YOURSELF
ALL STATES REQUIRE NOTIFICATION OF EXCAVATIONS. DESIGNERS, OR ANY PERSON PREPARING TO DISTURB THE EARTH'S SURFACE ANYWHERE IN ANY STATE
Know what's below.
Call before you dig.
FOR STATE SPECIFIC DIRECT PHONE NUMBERS VISIT: WWW.CALL811.COM

REV. DATE. DRAWN BY. DESCRIPTION

Carl P. O'Brien
NEW JERSEY LICENSED PROFESSIONAL ENGINEER
LICENSE NUMBER: 6645154
COLLIERS ENGINEERING & DESIGN, INC.
N.J. C.O.A. #: 24GA27986500

CONSTRUCTION PLANS

FOR
2020 VARIOUS
ROADWAY
IMPROVEMENTS

MAKATOM DRIVE,
MORNINGSIDE PLACE,
INDIAN SPRING ROAD, &
ORCHARD STREET

TOWNSHIP OF CRANFORD
UNION COUNTY
NEW JERSEY

Colliers

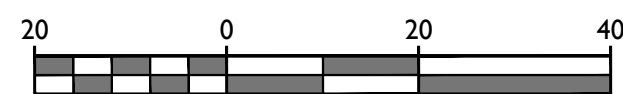
Engineering
& Design

MT. ARLINGTON
400 Valley Road,
Suite 304
Mt. Arlington, NJ 07856
Phone: 973.398.3110
COLLIERS ENGINEERING & DESIGN,
INC. DOING BUSINESS AS MASER
CONSULTING

SCALE: AS SHOWN
PROJECT NUMBER: CDT027
DATE: 1/8/21
DRAWN BY: PPC
CHECKED BY: BRP
DRAWING NAME: C-LAYT

DIMENSION PLAN

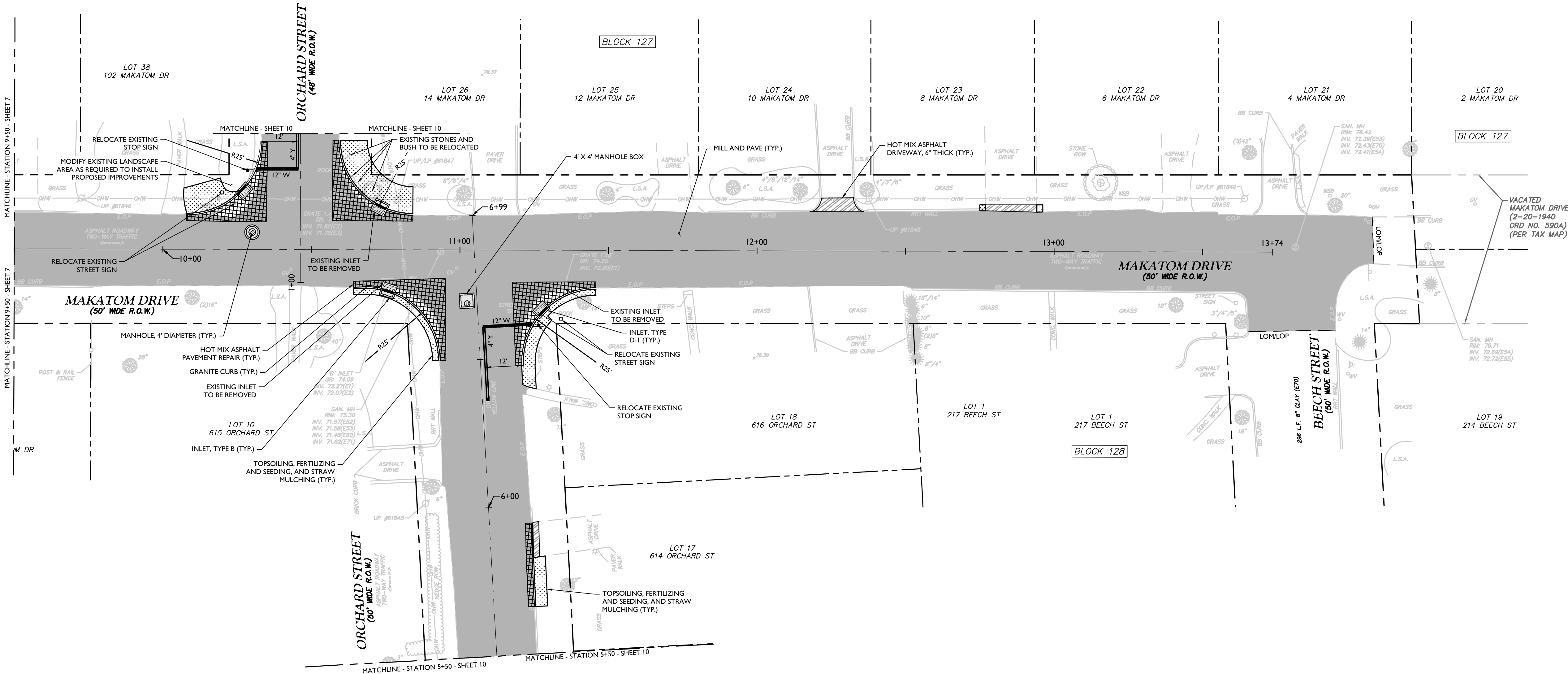
SHEET NUMBER:
8 of 26



NOTE: DO NOT SCALE DRAWINGS FOR CONSTRUCTION.

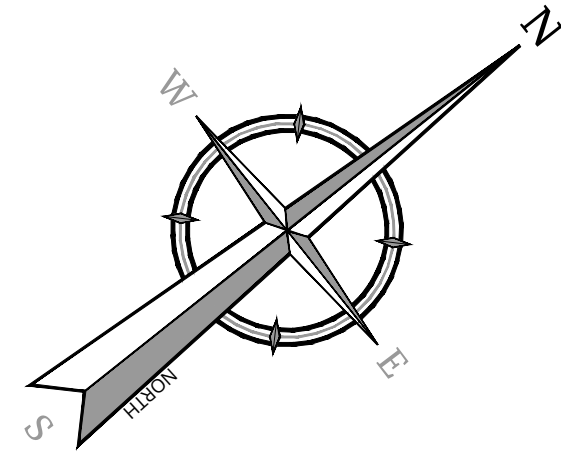
LEGEND

- MILL AND PAVE
- HOT MIX ASPHALT PAVEMENT REPAIR
- HOT MIX ASPHALT DRIVEWAY, 6" THICK
- RESET PAVER WALKWAY
- TOPSOILING, FERTILIZING AND SEEDING, AND STRAW MULCHING



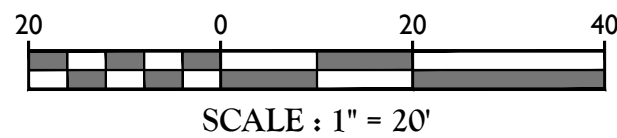
C:\CDT027\engineering\02a_Plan\C-LAYT.dwg C-LAYTOUT Bp PCO/CHE

C:\CD02\Engineering\24a Plan\CLAYT.dwg CLAYT 11/1/24 By: PCOLCHIE



LEGEND

- MILL AND PAVE
- HOT MIX ASPHALT PAVEMENT REPAIR
- HOT MIX ASPHALT DRIVEWAY, 6" THICK
- RESET PAVER WALKWAY
- TOPSOILING, FERTILIZING AND SEEDING, AND STRAW MULCHING



Colliers

Engineering
& Design

www.colliersengineering.com

Copyright © 2021, Colliers Engineering & Design All Rights Reserved. This drawing and all the information contained herein is authorized for use only by the party for whom the services were contracted or to whom it is certified. This drawing may not be copied, reused, disclosed, distributed or relied upon for any other purpose without the express written consent of Colliers Engineering & Design.

Doing Business as **MASER** CONSULTING



PROTECT YOURSELF
ALL STATES REQUIRE NOTIFICATION OF
EXCAVATIONS, DESIGNERS, OR ANY PERSON
PREPARING TO DISTURB THE EARTH'S
SURFACE ANYWHERE IN ANY STATE

Know what's below.
Call before you dig.
FOR STATE SPECIFIC DIRECT PHONE NUMBERS
VISIT: WWW.CALL811.COM

REV. DATE. DRAWN BY. DESCRIPTION

Carl P. O'Brien
NEW JERSEY LICENSED PROFESSIONAL ENGINEER
LICENSE NUMBER: 664154
COLLIERS ENGINEERING & DESIGN, INC.
N.J. C.O.A. #: 24GA2786500

CONSTRUCTION PLANS

FOR
2020 VARIOUS
ROADWAY
IMPROVEMENTS

MAKATOM DRIVE,
MORNINGSIDE PLACE,
INDIAN SPRING ROAD, &
ORCHARD STREET
TOWNSHIP OF CRANFORD
UNION COUNTY
NEW JERSEY



Engineering
& Design

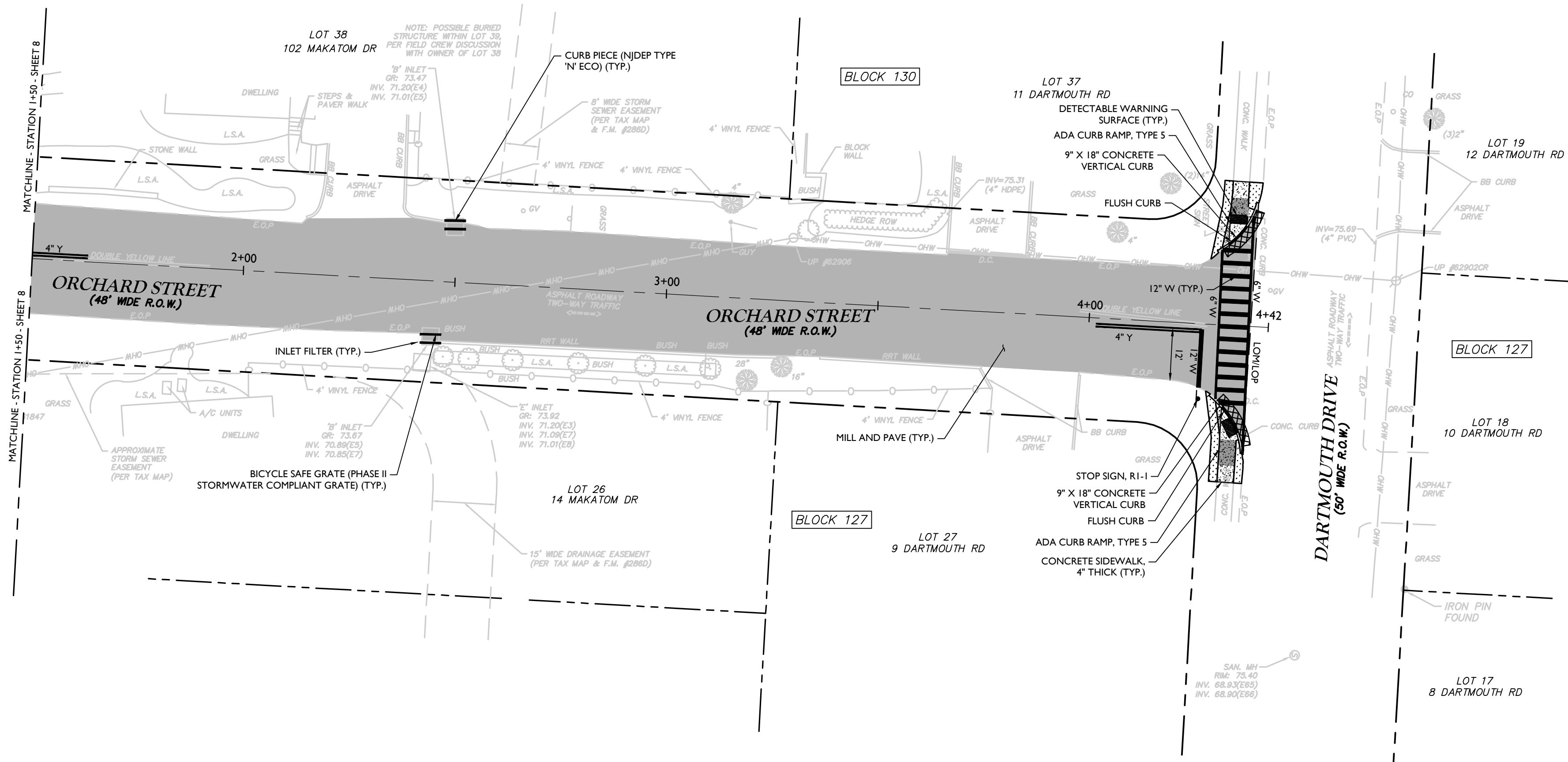
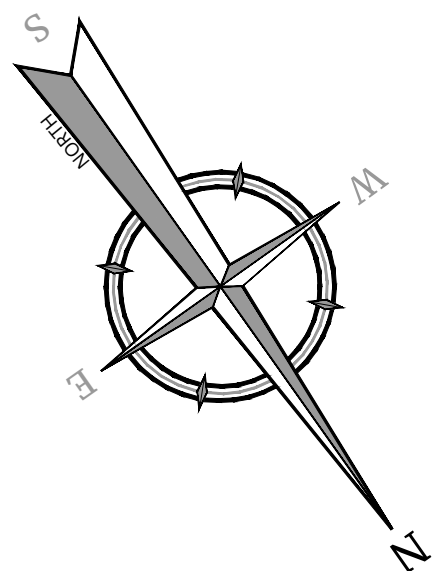
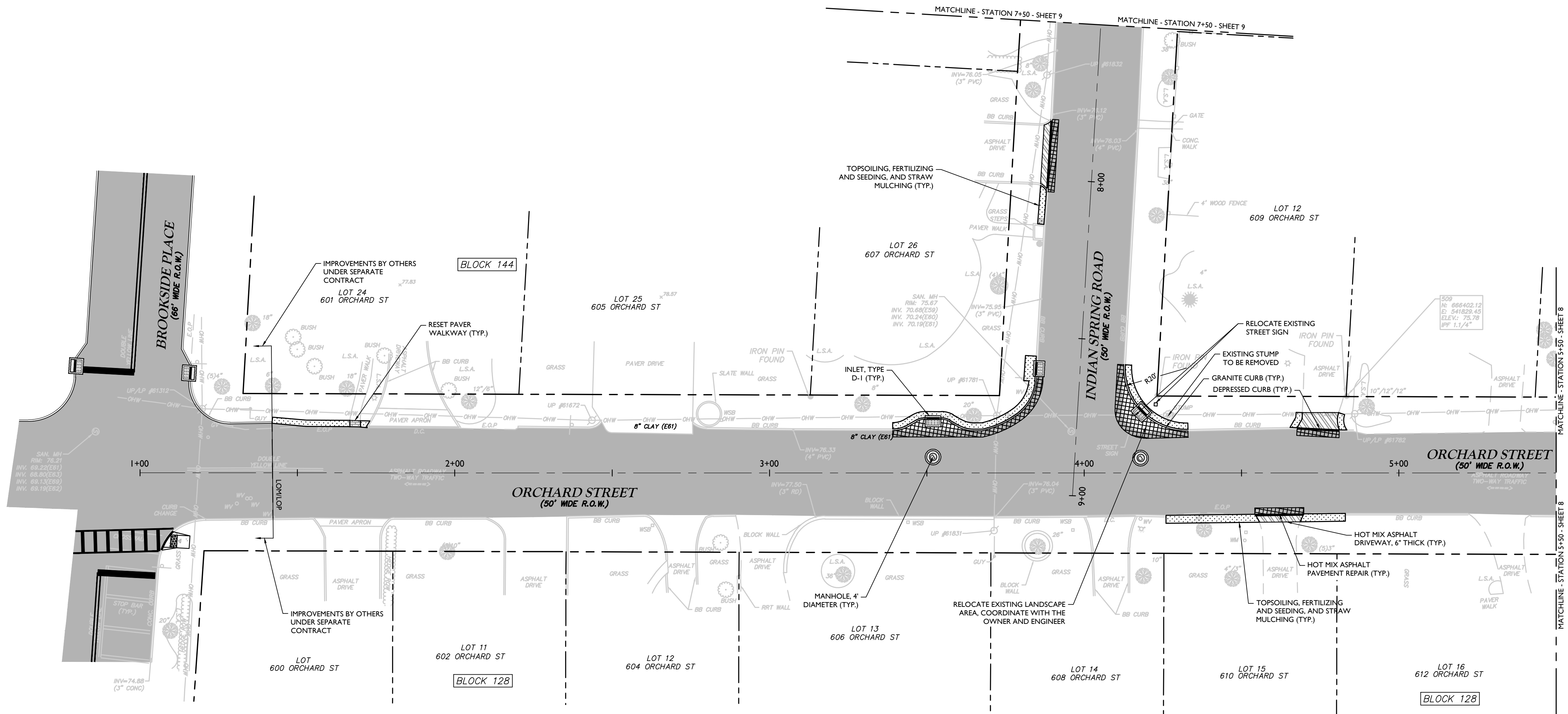
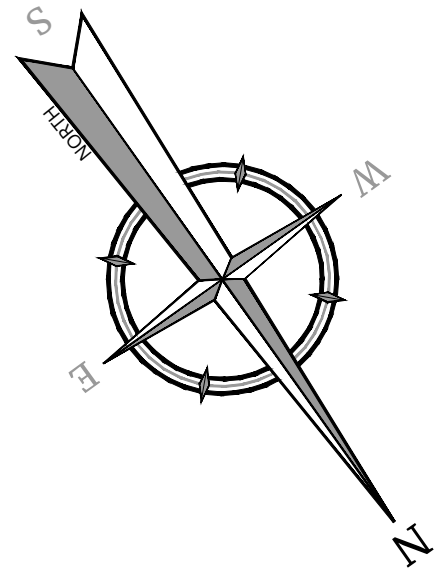
MT. ARLINGTON
400 Valley Road,
Suite 304
Mt. Arlington, NJ 07856
Phone: 973.398.3110
COLLIERS ENGINEERING & DESIGN,
INC. DOING BUSINESS AS MASER
CONSULTING

SCALE: AS SHOWN DATE: 1/8/21 DRAWN BY: PPC CHECKED BY: BRP
PROJECT NUMBER: CDT027 DRAWING NAME: CLAYT

DIMENSION PLAN

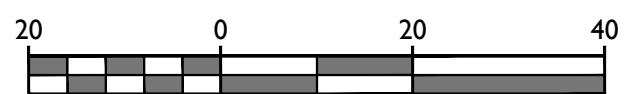
SHEET NUMBER:
9 of 26

NOTE: DO NOT SCALE DRAWINGS FOR CONSTRUCTION.



LEGEND

- MILL AND PAVE
- HOT MIX ASPHALT PAVEMENT REPAIR
- HOT MIX ASPHALT DRIVEWAY, 6" THICK
- RESET PAVER WALKWAY
- TOPSOILING, FERTILIZING AND SEEDING, AND STRAW MULCHING



SCALE: 1" = 20'

CONSTRUCTION PLANS

FOR
2020 VARIOUS
ROADWAY
IMPROVEMENTSMAKATOM DRIVE,
MORNINGSIDE PLACE,
INDIAN SPRING ROAD, &
ORCHARD STREETTOWNSHIP OF CRANFORD
UNION COUNTY
NEW JERSEY

DIMENSION PLAN